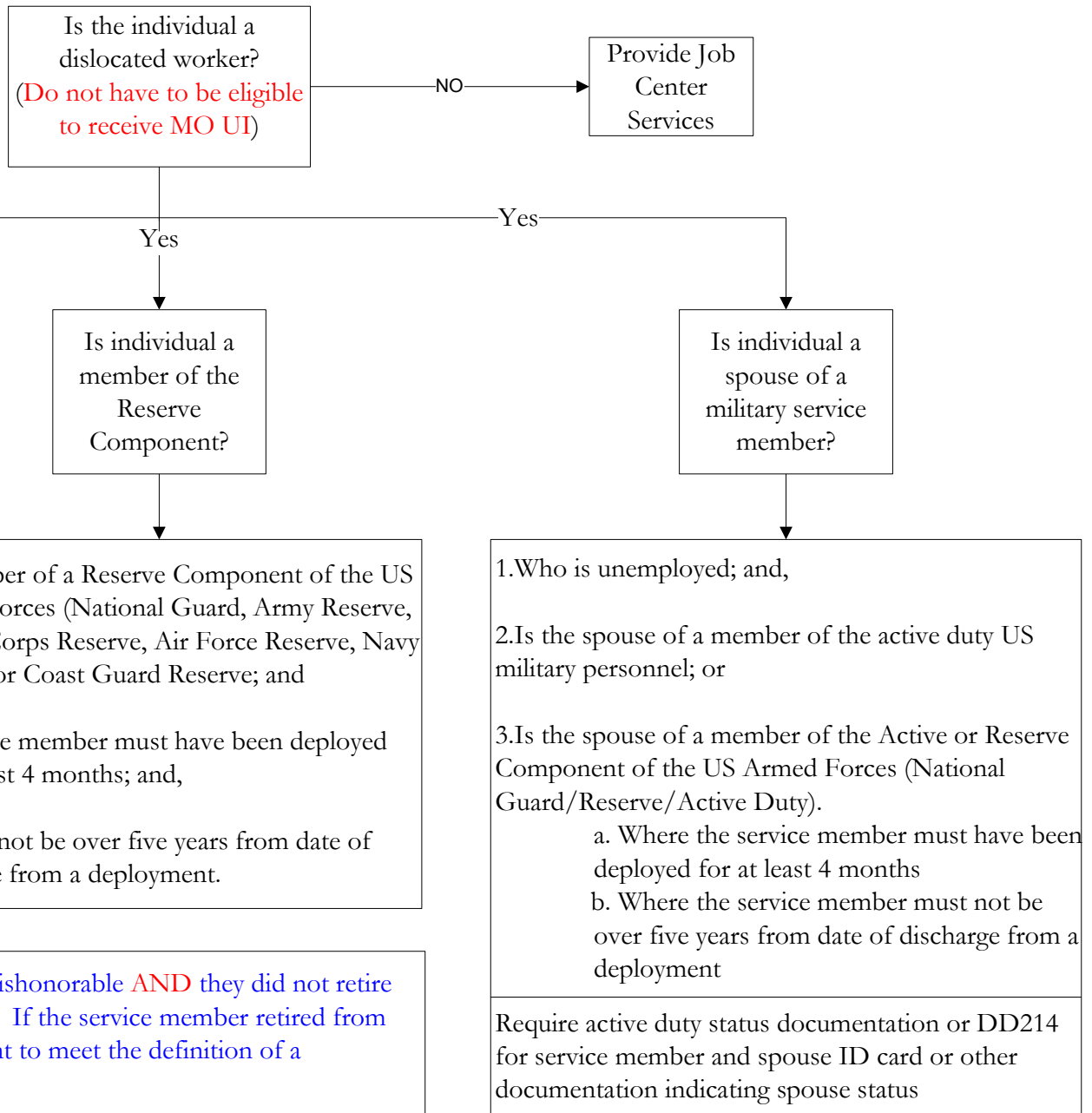


# Show-Me Heroes OJT Eligibility



# OJT



For additional information about Missouri Office of Workforce Development services, contact a Missouri Job Center near you. Locations and additional information are available at [jobs.mo.gov](http://jobs.mo.gov) or 1-888-728-JOBS (5627). The Missouri Department of Higher Education and Workforce Development is an equal opportunity employer/program. Auxiliary aids and services are available upon request to individuals with disabilities. Missouri Relay Services at 711. This workforce product was funded by a grant awarded by the U.S. Department of Labor's Employment and Training Administration. The product was created by the contracting agency and does not necessarily reflect the official position of the U.S. Department of Labor. The Department of Labor makes no guarantees, warranties, or assurances of any kind, express or implied, with respect to such information, including any information on linked sites and including, but not limited to, accuracy of the information or its completeness, timeliness, usefulness, adequacy, continued availability, or ownership. This product is copyrighted by the institution that created it. Internal use by an organization and/or personal use by a non-commercial purposes is permissible. All other uses require the prior authorization of the copyright owner.

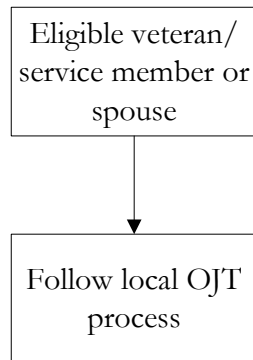


# Show-Me Heroes OJT Eligibility

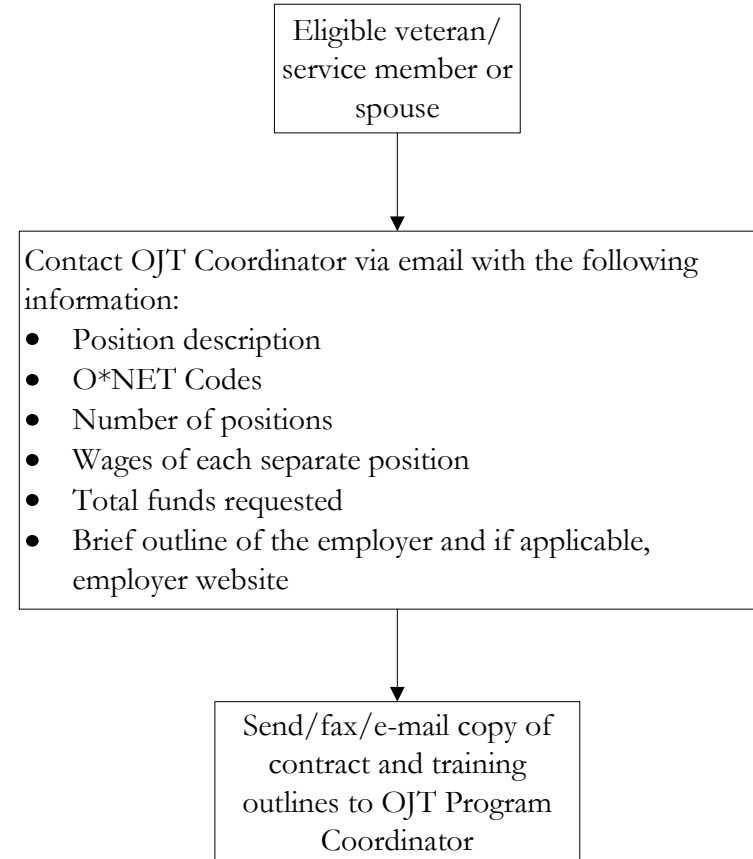


# OJT

## Workforce Development Board Show-Me Heroes OJT Process



## DWD State Show-Me Heroes OJT Process



For additional information about Missouri Office of Workforce Development services, contact a Missouri Job Center near you. Locations and additional information are available at [jobs.mo.gov](http://jobs.mo.gov) or 1-888-728-JOBS (5627). The Missouri Department of Higher Education and Workforce Development is an equal opportunity employer/program. Auxiliary aids and services are available upon request to individuals with disabilities. Missouri Relay Services at 711. This workforce product was funded by a grant awarded by the U.S. Department of Labor's Employment and Training Administration. The product was created by the contracting agency and does not necessarily reflect the official position of the U.S. Department of Labor. The Department of Labor makes no guarantees, warranties, or assurances of any kind, express or implied, with respect to such information, including any information on linked sites and including, but not limited to, accuracy of the information or its completeness, timeliness, usefulness, adequacy, continued availability, or ownership. This product is copyrighted by the institution that created it. Internal use by an organization and/or personal use by a non-commercial purposes is permissible. All other uses require the prior authorization of the copyright owner.

